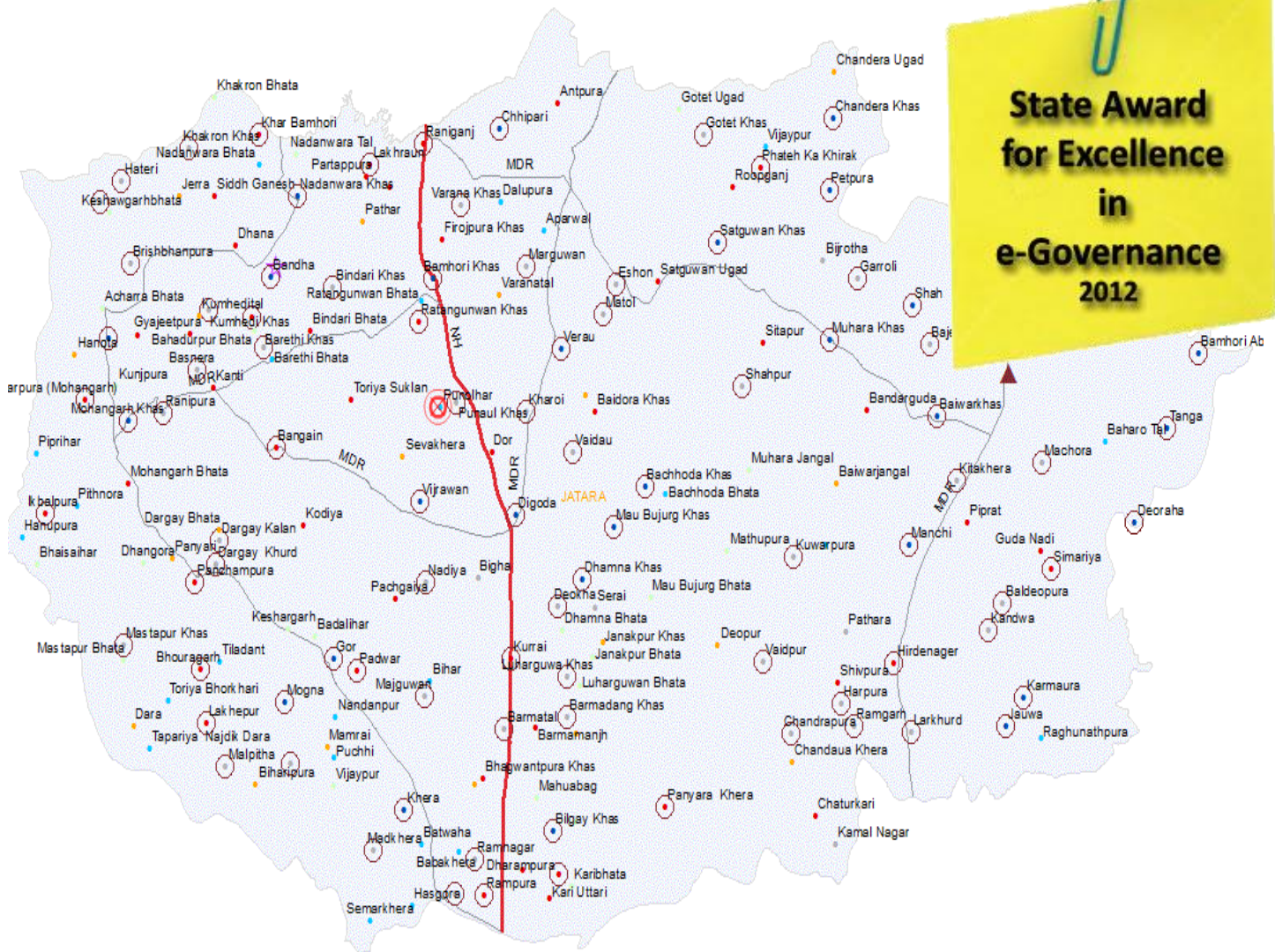


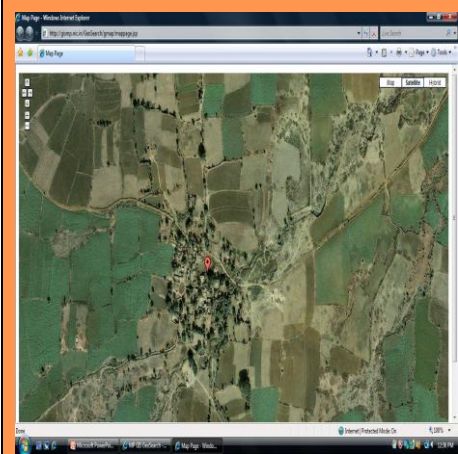
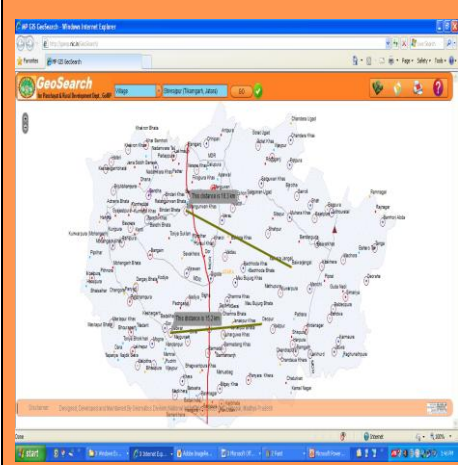
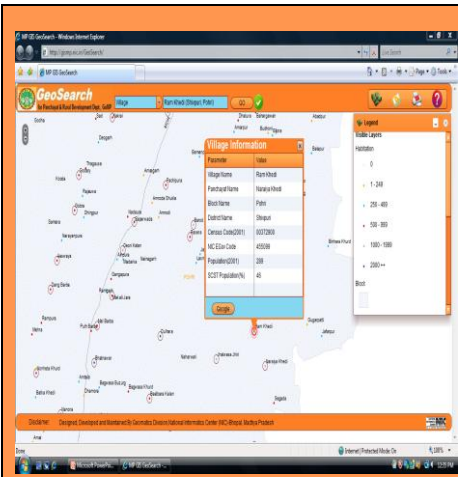
GeoSearch

Enabling Search in Madhya Pradesh

[Geo-portal : https://gismp.nic.in/GeoSearch](https://gismp.nic.in/GeoSearch)



GEOMATICS DIVISION
NATIONAL INFORMATICS CENTRE
C – Wing Basement Vindhyachal Bhawan
Bhopal MP Pin - 462004
India
Website : <https://gismp.nic.in>
Email : gis-mp@nic.in



About GeoSearch

'GeoSearch' (Internet Geomatics-based Application for Village/Panchayat search) facilitates identification of the location of a Village/Panchayat in the entire state of Madhya Pradesh with 55,393 (Census'2001) villages and more than 22,000 Gram Panchayats. It is based on Service Oriented Architecture (SOA) using web services and Flex technology. It is a G2C & G2G solution which has access via internet <http://gimp.nic.in/GeoSearch> available in public domain. It uses Enterprise GeoDatabase on villages, Panchayats, major road network etc. It facilitates display of Village/Panchayat on map on providing its first three letters. Panchayat is displayed along with its constituent villages.

Features

- Geo graphical coverage – All districts up-to village resolution
- Open ended architecture
- Easy remote access (via Internet)
- SOA Architecture & OGC compliant
- Identification of the location of a Village/Panchayat
- Display of Village/Panchayat profile
- Built in traverse-aid and distance/area calculation
- Spatial tool bar for Zoom/Pan/Legend/Printing etc.
- Google interface

Benefits

- Availability in public domain empowers citizen/decision makers
- Framework for the organizations (Govt./Private) & stakeholders to share and utilize
- Easier way of acquiring accurate information
- Helps achieve transparency and easiness in planning process
- Enables Panchayat constitution verification
- Aids in disaster management

